

FOR OUR GUESTS

We are glad you chose to worship with us today! We want to make your experience with us as easy and enjoyable as possible. The following information will help you to know what to expect today.

Please take advantage of our children's programs:

Nursery (ages 0 through 2 yrs.)

A staffed, teaching nursery is located out the auditorium doors to the right.

Jesus' Farm (Ages 3 yrs. - K)

Jesus Farm is our pre-school program, offered during both hours, to help children know that God loves & cares for us. Every activity is geared to the child's learning level. It is located out the auditorium doors to the left. Your child may be checked in at the wagon.

rEVOLVe (Grades 1 - 5)

rEVOLVe is our elementary age program located in the lower level of the fellowship hall. Bring your child down at 9:00 for Sunday School. Then, following congregational singing/worship songs, children will head to the lower level and enter a time of worship & an environment to develop a relationship with Jesus Christ through different activities.

The Offering - It is a privilege to give back to God a portion of the material blessings He has given us. Offering boxes are located on the walls at the back of the auditorium or you can give online @ ripleycoc.com.

Communion - We choose to offer the Lords' Supper each Sunday for all Christians to share. This is done to provide an opportunity to obey Christ to commune "in remembrance" of His death on the cross. Use this quiet time to draw close to the sacrificial Savior. Emblems can be picked up at the table in the foyer.

Decision and Dedication - Times for public responses to God are included in our worship. If you believe that Jesus is the Son of God, has the power to be your Savior, and has the right to be your Lord, this is an invitation for you to come to the front at the invitation song to announce your belief publicly and to

accept Christ by immersion in water (baptism). If you are an immersed believer in Jesus, and desire to be an active member of this body of believers, then come to affirm your faith publicly and express that desire. Responses for rededication and prayer are also encouraged by coming to the front at the invitation song.

If you would like further information about either of these decisions, feel free to schedule an appointment with one of our staff members. Individuals may make these decisions throughout the week and need not take place in the worship service.

If you need additional information or assistance, please ask an usher or greeter. They are here to assist you.

Ripley Church of Christ

9:00 am Worship & Sunday School

10:30 am Worship

Ph. 330-567-2320

www.ripleycoc.com

For more detailed information about our church, service opportunities or ministries, stop by our welcome center or visit us on the web. You'll find access to sermons, resources, calendar, and more.



July 18, 2021

Tom Benter
Senior Minister

Ariel Stivers
Children's Ministry Coordinator

Jeremiah Stivers
Associate Minister

Sermon Notes

HOW SWEET THE SOUND *It is Well With my Soul*

The Bible's filled with many of those kinds of heroes. Heroes who "...conquered kingdoms, enforced justice, obtained promises, stopped the mouths of lions, quenched the power of fire, escaped the edge of the sword, were made strong out of weakness, became mighty in war, put foreign armies to flight. -Hebrews 11:33-34

But life doesn't always work out that way.

I have told you these things, so that in me you may have peace. In this world you will have trouble. But take heart! I have overcome the world.
- John 16:33

BACKGROUND / AUTHOR Horatio Spafford 1828 - 1888
When peace like a river attendeth my way, When sorrows like sea-billows roll, Whatever my lot, Thou hast taught me to say, "It is well, it is well with my soul!"

In the middle of our pain _____.
God is close to the broken hearted and he saves those who are crushed in spirit.
- Psalm 34:18

By faith Abel brought God a better offering than Cain did. By faith he was COMMENDED as righteous, when God spoke well of his offerings. And by faith Abel still speaks, even though he is dead.
- Hebrews 11:4

God n_____! God holds you up as an e_____ for others.

Despite the ebb and flow of our circumstances, with Jesus in our lives peace washes over us, like a river.

This life _____!

"... they desire a better country, that is, a heavenly one. Therefore, God is not ashamed to be called their God, for he has prepared for them a city."
- Hebrews 11:16

CONCLUSION

Philip Paul Bliss. 1838 - 1876
"My Redeemer"



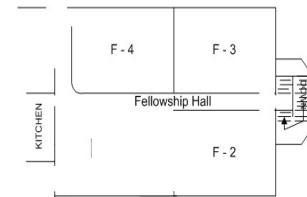
—September 19—

This Week

| | | |
|-----------|---------|-------------------------|
| Today: | 9:00 a | Worship & Sunday School |
| | 10:30 a | Worship & Sunday School |
| Wed: | 7:00 p | Men's Bible Study |
| Thursday: | 6:30 p | Worship Practice |

ABF Classes / Locations

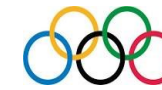
9:00a
Adult Study (Philippians) F3
Women's Class: Before Amen by Max Lucado
Conference Room
10:30a
College / Young Adults



July 4 Giving \$5,147.17 Budget \$7,692.31

Auditorium Doors - When entering or exiting the auditorium, please do not allow the door to swing freely; slow the door behind you. This will eliminate noise and the potential to hit someone in the hallway.

Upcoming Events



TONIGHT, 5:45-8pm, Olympic Game Night Fun for the whole family! Sign-up today! Dinner provided.



August 9-14—Ripley Golf Cart Shuttle If you want to help people and have the most fun at the fair, drive a shift on the Ripley Golf Cart Shuttle (must be 25) at the Holmes County Fair. Ripley will need drivers 9am-9pm all days. Sign up at the Registration Station in the office hallway. Never driven before? It's easy! Free ticket to get in to the fair when you drive!

Monday, September 13, 8pm, Crowder Concert at Wayne County Fair. Please pay for your Crowder tickets, if you haven't already done so.

Benevolence Ministry: We are in need of the following items: Cleaning supplies, laundry soap, paper products, toilet paper.

Ladies' Fellowship: Still in need of money for shipping boxes (\$9 ea) can be given to Janet Barnes

Fellowship Ministry: We need people to help with Fellowship Meals and Funeral Meals.

**Sign-up sheets and drop boxes are located at the Registration Station / Workroom.*

Love INC looking for volunteers for the Love INC Back to School Bash on August 7. Additionally, Love INC is looking for a donated mobility scooter for a Holmes County resident. If you would like to help with Love INC's Back to School Bash or have a scooter you would like to donate, call Love INC at 330.473.6017.