

FOR OUR GUESTS

We are glad you chose to worship with us today! We want to make your experience with us as easy and enjoyable as possible. The following information will help you to know what to expect today.

Please take advantage of our children's programs:

Nursery (ages 0 through 2 yrs.)

A staffed, teaching nursery is located out the auditorium doors to the right.

Jesus' Farm (Ages 3 yrs. - K)

Jesus Farm is our pre-school program, offered during both hours, to help children know that God loves & cares for us. Every activity is geared to the child's learning level. It is located out the auditorium doors to the left. Your child may be checked in at the wagon.

rEVOLVe (Grades 1 - 5)

rEVOLVe is our elementary age program located in the lower level of the fellowship hall. Bring your child down at 9:00 for Sunday School. Then, following congregational singing/worship songs, children will head to the lower level and enter a time of worship & an environment to develop a relationship with Jesus Christ through different activities.

The Offering - It is a privilege to give back to God a portion of the material blessings He has given us. Offering boxes are located on the walls at the back of the auditorium or you can give online @ ripleycoc.com.

Communion - We choose to offer the Lords' Supper each Sunday for all Christians to share. This is done to provide an opportunity to obey Christ to commune "in remembrance" of His death on the cross. Use this quiet time to draw close to the sacrificial Savior. Emblems can be picked up at the table in the foyer.

Decision and Dedication - Times for public responses to God are included in our worship. If you believe that Jesus is the Son of God, has the power to be your Savior, and has the right to be your Lord, this is an invitation for you to come to the front at the invitation song to announce your belief publicly and to

accept Christ by immersion in water (baptism). If you are an immersed believer in Jesus, and desire to be an active member of this body of believers, then come to affirm your faith publicly and express that desire. Responses for rededication and prayer are also encouraged by coming to the front at the invitation song.

If you would like further information about either of these decisions, feel free to schedule an appointment with one of our staff members. Individuals may make these decisions throughout the week and need not take place in the worship service.

If you need additional information or assistance, please ask an usher or greeter. They are here to assist you.



Ripley Church of Christ

9:00 am Worship & Sunday School

10:30 am Worship

Ph. 330-567-2320

www.ripleycoc.com

For more detailed information about our church, service opportunities or ministries, stop by our welcome center or visit us on the web. You'll find access to sermons, resources, calendar, and more.



November 28, 2021

Tom Benter
Senior Minister

Ariel Stivers
Children's Ministry Coordinator

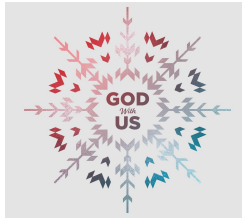
Jeremiah Stivers
Associate Minister

Sermon Notes

Where is God in the Valleys?

Look! The virgin will conceive a child! She will give birth to a son, and they will call him Immanuel, which means 'God is with us.'

- Matthew 1:23



INCARNATION: _____

It's so easy to believe God is with us when things are good. But it's sometimes more difficult to sense His presence when you're in the valley. And unfortunately some of you are there right now.

We may E_____ God on the mountaintops, but we get to K_____ Him intimately in the valleys.

Psalm 84:5-6a Blessed are those whose strength is in you, whose hearts are set on pilgrimage. As they pass through the Valley of Baka...

The Valley of Baka...

T_____, W_____, I_____

Blessed are those whose strength is in you...

If you don't know God intimately, _____.

My grace is sufficient for you, for My strength is made perfect in weakness. - 2 Corinthians 12:9 (NKJ)

...on a pilgrimage

The place of p_____.

hearts are set ...

Psalm 84:6 As they pass through the Valley of Baka, they make it a place of springs; the autumn rains also cover it with pools.

As they pass through....

The valley is not our d_____!

...they make it a place of springs;...

Make r_____ for the provision of God.

God never promised you'd never go through the valley. He promised you'd never go through the valley a_____.

Psalm 84:7 They go from strength to strength, till each appears before God in Zion.

The same God that is g_____ on the mountaintops is g_____ in the valley.

Christmas Activities



How it Works:

1. Keep track of all the Christmas expenses you encounter this Christmas season.
2. Give an extra gift this Christmas season that is greater than the average amount you spend on people this year. A special offering will be received on December 19.

Staff Appreciation / Christmas Bonus' - You can contribute by identifying on your offering envelope or giving to one of the Elders.

Dinner Theater December 10 & 11 6:00p

Reservations required for Dinner 330.567.2320

Play 7:30p

Dec 12 10:30a play only



Christmas Eve Services- 4:30 & 6:00p

This Week

Today:	9:00 a	Worship & Sunday School
	10:30 a	Worship & Sunday School
	6:00 p	Flourish Women's Group
Wed:	6:30 p	Play Practice in Auditorium
	7:00 p	Men's Bible Study, Fellowship Hall
	7:00 p	Ladies' Fasting Class Organizational Meeting (class begins after Christmas)

ABF Classes / Locations

9:00a

Adult Study, Luke F3

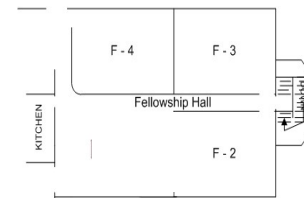
Women's Class: The Power of a Praying Woman by Stormie Omartian Conference Room

10:30a

College / Young Adults F-3

Young Woman's Bible Study, Conf. Room

Love INC Class, Fellowship Hall



Nov. 21	Giving \$8,190.40	Budget \$7,692.31
---------	-------------------	-------------------

Auditorium Doors - When entering or exiting the auditorium, please do not allow the door to swing freely; slow the door behind you. This will eliminate noise and the potential to hit someone in the hallway.

Upcoming Events

Congratulations to Steve Adams (Deacon) & Matt Muzic (Deacon) The Elders have reappointed Kevin Higgins and Gary Cline (Elders) and Jarrod Snell, Harold Firebaugh and Keith Marcum (Deacons) to another term.

Congratulations to Stan & Debbi Miller, Melissa Muzic on their transfer of memberships to Ripley.

If anyone is interested in covering the office phone December 27-31 for full or half days during Janelle's vacation, call the office at 330.567.2320 or text 330.466.9664.

Ladies: Do you long for intimacy with God? Do you desire to feel His presence, to hear His voice, to sense His pleasure? If drawing near to God is the desire of your heart, then we invite you to join us in an invigorating study of the discipline of fasting. Organizational meeting: 12/1/2021 @ 7 pm in the Ripley conference room. Actual Bible Study will not start until after Christmas. If you have any questions please contact Marla Tip-ton (330)347-1025

Benevolence Ministry— Thank you to everyone for their generous donations of food over the years. We have decided to discontinue the pantry due to a lack of requests and are coordinating with Sweethaven for immediate food needs. We will be collecting items for the Baskets of Blessing instead. Items needed are tissues, napkins and paper plates. See Lori Armstrong if you have any questions.

Ripley Ladies' Fellowship banquet Monday, 12/13, 6:00 p. All welcome. Meat, rolls, beverage provided. Please bring a side dish and items for the "Good Deeds" basket.

Found—Phone -See the office, if you think it might be yours.



***NOTE: Masks and communion supplies are available in the foyer as you enter.**