

FOR OUR GUESTS

We are glad you chose to worship with us today! We want to make your experience with us as easy and enjoyable as possible. The following information will help you to know what to expect today.

Please take advantage of our children's programs:

Nursery (ages 0 through 2 yrs.)

A staffed, teaching nursery is located out the auditorium doors to the right.

Jesus' Farm (Ages 3 yrs. - K)

Jesus Farm is our pre-school program, offered during both hours, to help children know that God loves & cares for us. Every activity is geared to the child's learning level. It is located out the auditorium doors to the left. Your child may be checked in at the wagon.

rEVOLVe (Grades 1 - 5)

rEVOLVe is our elementary age program located in the lower level of the fellowship hall. Bring your child down at 9:00 for Sunday School. Then, following congregational singing/worship songs, children will head to the lower level and enter a time of worship & an environment to develop a relationship with Jesus Christ through different activities.

The Offering - It is a privilege to give back to God a portion of the material blessings He has given us. Offering boxes are located on the walls at the back of the auditorium or you can give online @ ripleycoc.com.

Communion - We choose to offer the Lords' Supper each Sunday for all Christians to share. This is done to provide an opportunity to obey Christ to commune "in remembrance" of His death on the cross. Use this quiet time to draw close to the sacrificial Savior. Emblems can be picked up at the table in the foyer.

Decision and Dedication - Times for public responses to God are included in our worship. If you believe that Jesus is the Son of God, has the power to be your Savior, and has the right to be your Lord, this is an invitation for you to come to the front at the invitation song to announce your belief publicly and to

accept Christ by immersion in water (baptism). If you are an immersed believer in Jesus, and desire to be an active member of this body of believers, then come to affirm your faith publicly and express that desire. Responses for rededication and prayer are also encouraged by coming to the front at the invitation song.

If you would like further information about either of these decisions, feel free to schedule an appointment with one of our staff members. Individuals may make these decisions throughout the week and need not take place in the worship service.

If you need additional information or assistance, please ask an usher or greeter. They are here to assist you.

Ripley Church of Christ

9:00 am Worship & Sunday School

10:30 am Worship

Ph. 330-567-2320

www.ripleycoc.com

For more detailed information about our church, service opportunities or ministries, stop by our welcome center or visit us on the web. You'll find access to sermons, resources, calendar, and more.



October 17, 2021

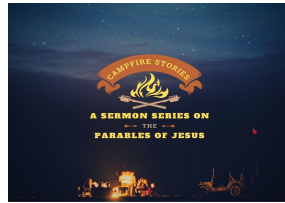
Tom Benter
Senior Minister

Ariel Stivers
Children's Ministry Coordinator

Jeremiah Stivers
Associate Minister

Sermon Notes

Campfire Stories



Week 4: The Joy of Forgiveness

Luke 15:25-32

1. We have to _____.
- Matthew 23:25-28; Luke 18:9-14

- Two emotions that are roadblocks for forgiveness

1. _____
2. _____

2. We have to _____.

- Forgiving _____ means to truly _____ God's forgiveness.

Four steps towards accepting God's forgiveness

1. A moment of _____ and _____.
- Psalm 32:5; Jeremiah 15:19

2. Realize _____ comes from the _____.
- Psalm 103:8-12

3. _____ courageously
- Philippians 3:13

4. Live as a _____.
- 2 Corinthians 5:17-21



Today , Bible Basics Class
@10:30a.
Tom is leading. How did we get the Bible? Is it reliable?

Fall Festival & Trunk or Treat Sunday, October 24, 5-7 p.

Hotdogs & Refreshments Provided

Sign-up sheets at the Registration Station



Ripley is now collecting 600 pkgs Ramen Noodles

for Holmes County Share-a-Christmas, to reach the less fortunate, providing them with practical, tangible help during the holiday season. Leave in office hallway *before* November 28.



This Week

Today:	9:00 a	Worship & Sunday School
	10:30 a	Worship & Sunday School
	6:00 p	Youth Launch
Tue:	6:30 p	American Heritage Girls
Wed:	6:30 p	Play Practice in Auditorium
	7:00 p	Men's Bible Study
Thurs:	3-6:00 p	WIC Sign-Up in Conference Room
	6:30 p	Worship Practice

ABF Classes / Locations

9:00a

Adult Study, Luke F3

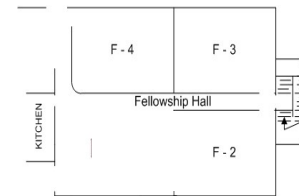
Women's Class: The Power of a Praying Woman by Stormie Omartian Conference Room

10:30a

College / Young Adults F-3

Young Woman's Bible Study, Conf. Room

Bible Basics, Fellowship Hall



Oct. 10 Giving \$7,650.99 Budget \$7,692.31

Auditorium Doors - When entering or exiting the auditorium, please do not allow the door to swing freely; slow the door behind you. This will eliminate noise and the potential to hit someone in the hallway.

Upcoming Events

Young Woman's Bible Study

Meeting during 2nd worship service (10:30) in Conf. Room

Elders, Deacons & Missions Ministry Members, please pick up mail in your mailboxes today

Flourish Women's Group Starting October 31, 6-8:00 p.

Come join us as we connect with women in our community to discover our true potential, share our stories and encourage one another to be the best version of ourselves. Find out more at 330.600.2387 or sign up at the Registration Station.

Ladies' Fellowship is Again Collecting Gift Cards for Our College Students. Gift cards can be given to any Ladies' Fellowship member or placed in the secretary's mailbox **by Oct. 31**

Military Boxes We are partnering again with the Shreve American Legion for military boxes and to help the homeless in Wooster. We are in need of small personal hygiene items (shampoo, bars of soap, toothpaste and toothbrushes, combs and hair brushes, deodorant, etc.). Gloves, ski caps, and socks are also welcomed. Office needs addresses for Military AND college Oct 31.

November 11-13 Senior Ministry Road Trip, Sight & Sound Experience—deadline extended. You can still go along. Let Tom know ASAP.



***NOTE: For those who would like a mask, they are available in the foyer. Social Distancing seating is available on the left wing. Communion supplies need to be picked up in the foyer as you enter.**

STOP

Feeling Sick?

Stay home when you are ill!

If you feel unwell or have the following symptoms
DO NOT ENTER THE BUILDING

FEVER

COUGH

SHORTNESS OF BREATH

Join us online at 9:00a Youtube / FaceBook